

## 1280 X 768 Screen Resolution Microsoft Project Professional 2021 32/64 Bits

### Our Product Introduction

for more products please visit us on [computersoftware-systems.com](https://computersoftware-systems.com)

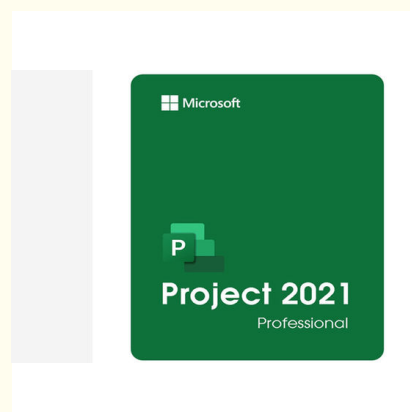
#### Basic Information

- Place of Origin: Ireland
- Brand Name: Microsoft
- Certification: Microsoft Certified
- Model Number: Project Professional 2021
- Minimum Order Quantity: 10pcs
- Price: Negotiable
- Packaging Details: Factory Sealed Retail box / OEM
- Delivery Time: 3-7 work days
- Payment Terms: T/T, Western Union, MoneyGram, Paypal, Skrill
- Supply Ability: 5000pcs/week



#### Product Specification

- Display: 1280 X 768 Screen Resolution
- Processor: 1.6 Gigahertz (GHz)
- Email Delivery Way: Available
- Hard Disk Space: 4.0 GB Of Available Disk Space
- Activation Type: Online
- System Type: Windows
- Memory: 4 GB RAM; 2 GB RAM (32-bit)
- Highlight: **1280 x 768 Microsoft Project Professional 2021, 64 Bits Microsoft Project Professional 2021, Windows microsoft project pro 2021**



## Product Description

### 1280 x 768 screen resolution Microsoft Project Professional 2021 32/64 Bits

Microsoft's Project Professional 2021 is a task administration software. Its initial release was all the way back in 1984, meaning that the software has been through many changes and re-branding since it was first introduced to the public eye. Project was Microsoft's third application that is primarily created for Windows. It didn't take a long time for it to skyrocket and claim an important spot when it comes to PC-based project management. Its most known uses include easy project management when constructing plans, distributing and assigning different assets to projects, creating financial plans, and managing workloads. Project Professional 2021 enables you to work together with others to effectively begin and convey your projects. It incorporates every one of the highlights from Project Standard, in addition to enhanced collaboration tools, asset administration, SharePoint task synchronization, or to submit timesheets.

#### Microsoft Corporation

Pre-built templates help you get your project started on the right track  
Sync with Project Online and Project Server  
Submit timesheets to capture time spent on project and non-project work  
Run what-if scenarios to make the most of your task assignments  
Auto-populate start and end dates based on dependencies  
Visually represent complex schedules with built-in multiple timelines  
Licensed for 1 PC  
Supports Long-Term Servicing Channel (LTSC) and is compatible with Office LTSC and Office 2021

#### Benefits:

##### Informative reports

Built-in reports like Burndown and Resource Overview provide insights to stakeholders to achieve better results.

##### Timesheets

Submit timesheets to capture time spent on project and non-project work for payroll, invoicing, and more.

##### Visualize relationships

Task path highlighting in Gantt charts gives you visibility to the relationships between tasks.

##### Collaboration

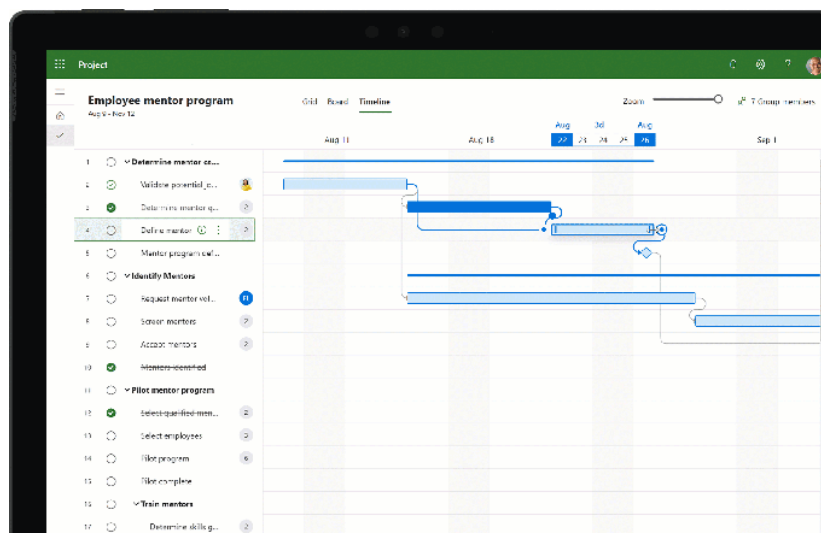
Hover over team members' names in a project plan to see online presence and start chats or calls through Microsoft Teams for Business (licensed separately).

The project creates budgets based on assignment work and resource rates. As resources are assigned to tasks and assignment work estimated, the program calculates the cost, equal to the work times the rate, which rolls up to the task level and then to any summary tasks and finally to the project level. Resource definitions (people, equipment and materials) can be shared between projects using a shared resource pool. Each resource can have its own calendar, which defines what days and shifts a resource is available. Resource rates are used to calculate resource assignment costs which are rolled up and summarized at the resource level. Each resource can be assigned to multiple tasks in multiple plans and each task can be assigned multiple resources, and the application schedules task work based on the resource availability as defined in the resource calendars. All resources can be defined in label without limit. Therefore, it cannot determine how many finished products can be produced with a given amount of raw materials. This makes Microsoft Project unsuitable for solving problems of available materials constrained production. Additional software is necessary to manage a complex facility that produces physical goods.

The application creates critical path schedules, and critical chain and event chain methodology third-party add-ons also are available. Schedules can be resource leveled, and chains are visualized in a Gantt chart. Additionally, Microsoft Project can recognize different classes of users. These different classes of users can have differing access levels to projects, views, and other data. Custom objects such as calendars, views, tables, filters, and fields are stored in an enterprise global which is shared by all users.

#### Requirements:

Processor	1.6 gigahertz (GHz) or faster, 2-core
Operating system	Windows 11, Windows 10, Windows Server 2019
Memory	4 GB (64bit), 2 GB (32bit) RAM
Hard disk space	4 GB available disk space
Display	1280 x 768 screen resolution
Graphics	DirectX 10 graphics card for graphics hardware acceleration



Minko Software Service Co. LTD



86-13539872669



sales@hkminko.com



computersoftware-systems.com

Huaqiang North ,Futian district,Shenzhen City,China